

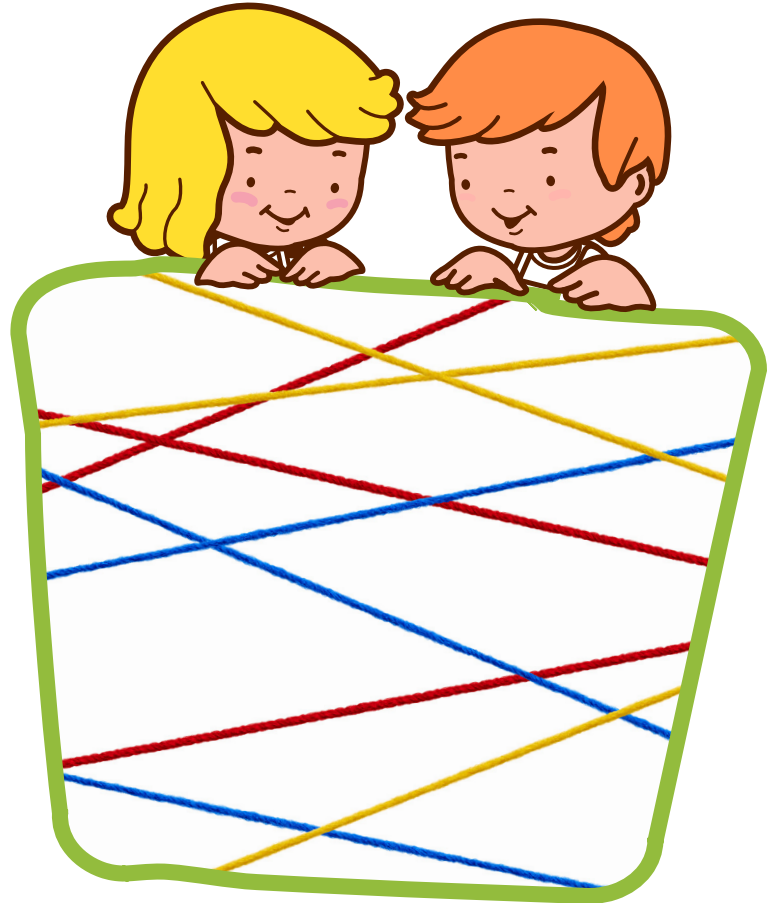


kids only!  
**ACTIVITY  
CORNER**

## String Laser Maze

### You will need...

1 large ball of string or wool  
tape or bluetack  
mini bells (optional)\*  
scissors



### What to do...

#### one:

Choose a space where you can set up your laser maze safely, such as a hallway or space behind a sofa. Somewhere narrow is ideal.

#### two:

Pick your start and end point, and either tie one end of the string around an object (such as a door handle), or carefully tape or bluetack one end to the wall. Make sure the tape you use is not too sticky, so it doesn't damage the walls afterwards.

#### three:

Choose your next anchor point for your string, then guide the ball of string across to make sure it's the right length. Carefully cut your string a little longer than the point where it meets the wall, then tie or stick the end to the wall.

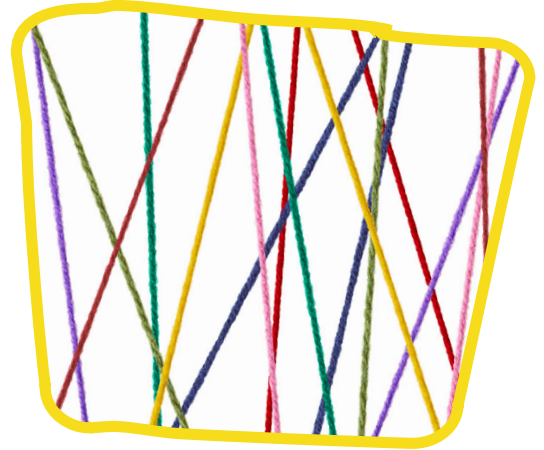


kids only!  
**ACTIVITY  
CORNER**

## String Laser Maze

### four:

Keep doing this lots of times, using lots of different angles and heights until you reach the end point that you chose at the beginning.



### five:

Now, try to make your way through the maze without touching any of the string. You can add more string or mini obstacles as you get better and better at getting through, or you could add some treasure at the end to collect.

\* To make it extra tricky, you could tie some mini bells to each piece of string to make an alarm when you touch it!



**all done!**